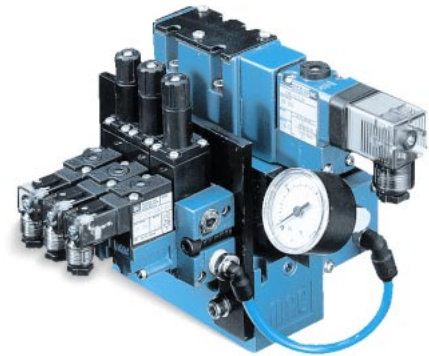


Pressure control system with digital command signal.

OPERATIONAL BENEFITS

1. The use of a digital command signal brings easy installation and use.
2. A compact unit gathering all components saves room and installation costs.
3. This system is the alternative to proportional valves, if no more than six different pressures are required.



COMPONENTS

The Multi-Pressure Pak is made of the following components :

- one 35 Series manifold for the pressure selection.
- one (or more) directional valves to be selected as a function of the flow required.
- one remote air pressure regulator for main pressure control.

FIELDS OF APPLICATION

The Multi-Pressure Pak is suitable for all applications requiring up to six different pre-determined pressures (no progressive pressure rise or descent). The numerous possibilities of pressures, flows and pressure ranges makes it easy to find the best appropriate configuration.

This system has proved its abilities in the automotive industry, for the operation of welding grips and robots. Many other applications are fulfilled, like pressure selection for any supply network or machinery, force control in a cylinder, ...

OPERATION

35 SERIES MANIFOLD

This is the pressure selector of the whole system. Each valve is fitted out with one individual pressure regulator and they are cascade - connected to a single common outlet. When energized, the pressure signal will correspond to the individual pre-determined pressure.

REMOTE AIR SANDWICH REGULATOR

The common outlet port of the 35 Series manifold gives a pressure signal to the sandwich regulator. This one in turn will regulate the main pressure as a function of the command signal.

DIRECTIONAL VALVE(S)

Depending on the application, one or more directional valves will be used. For instance : a 4/2 valve for the welding control (with the regulated pressure) and another one (with the network pressure) for the command of the robot arm (grip movements).



**TECHNICAL
DATA**

Pressure range :	2 to 8 bar
Output pressure :	Standard : 0.5 to 7 bar, other ranges upon request.

Series	Port size	Flow	Height	Width	Length	Weight
82	G1/4" - G3/8"	900 NI/Min (C _v 0.9)	158,75 mm	190,50 mm	228,60 mm	3,6 kg
6300	G3/8" - G1/2"	2100 NI/Min (C _v 2.1)	165,10 mm	254,00 mm	254,00 mm	5,7 kg
6500	G1/2" - G3/4"	3500 NI/Min (C _v 3.5)	203,20 mm	273,00 mm	254,00 mm	6,8 kg
ISO 1	G1/4" - G3/8"	1100 NI/Min (C _v 1.1)				
ISO 2	G3/8" - G1/2"	2100 NI/Min (C _v 2.1)				
ISO 3	G1/2" - G3/4"	5000 NI/Min (C _v 5.0)				

HOW TO ORDER ?

Please consult factory for the selection of best appropriate MPP.